



**BITUMAT**  
بيتومات

The Power to Perform

قوة في الأداء



NRCA MEMBER



ISO CERTIFIED

## BITUPROTECT

Bitumenous Protection Board

### DESCRIPTION

BITUMAT BITUPROTECT is a high strength, indentation and impact resistant panel, fabricated from mineral reinforced bitumen formed between two layers of dimensionally stable bitumen saturated glass mat, hot fused and pressed during the manufacturing process to form a semi rigid panel.

### USES

BITUMAT BITUPROTECT is a universal protection panel used to protect the waterproofing systems from damage during construction activities and backfilling. It can also be used as a protection panel or, as a walk pad over exposed roofs or around mechanical equipments installed on roofs.

BITUMAT BITUPROTECT with its high resistance to puncture and impact becomes an ideal protection to the membrane against sharp aggregate and other alien matter that comes along with the backfill. It even provides protection against unintentional physical abuse caused by other tradesmen.

### OUTSTANDING FEATURES

- Semi flexible but tough, can withstand normal soil or structural movements.
- Water resistant, withstands wet soil conditions.
- Absorbs the impact of aggregates.
- Withstand foot traffic.
- Protects the waterproofing membrane from penetration of sharp edges of steel reinforcement.

- Compatible with most waterproofing systems, especially the bituminous systems.
- Much more durable than fibre boards which soften in due course of time.
- Easy to install.
- Salt chemical resistant

### GENERAL DATA

Nominal Weight	: 4 to 8 kg per M <sup>2</sup>
Nominal Thickness	: 3, 4 & 6MM
Nominal Board Size	: 1.0x 2 Mtr.

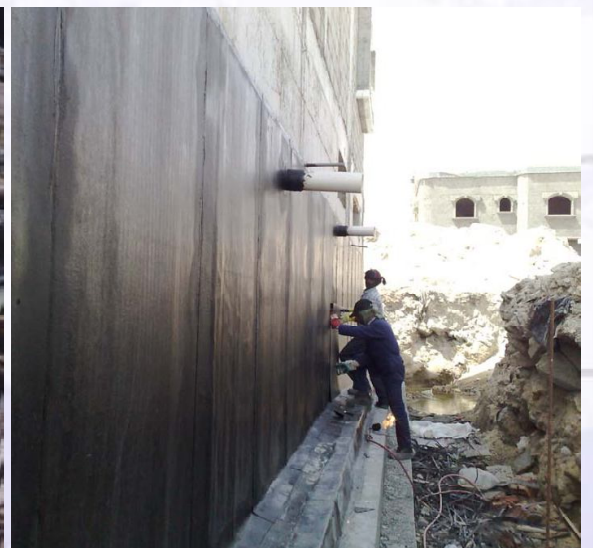
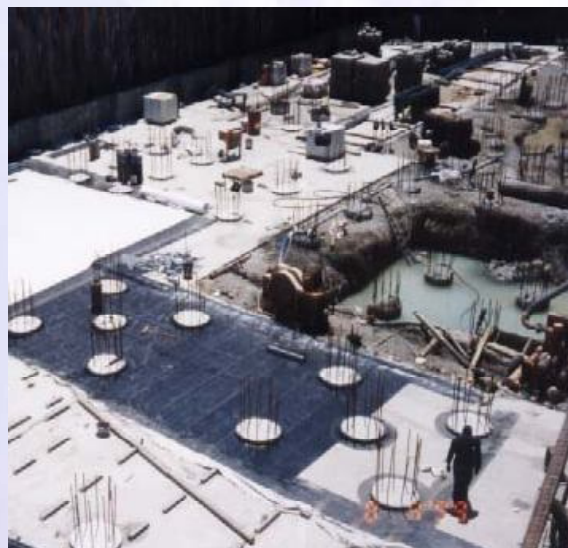
### INSTALLATION

BITUMAT BITUPROTECT should be installed continuously over the waterproofing membrane and can be cut easily with a roofer's knife to fit all areas. For horizontal surfaces, butt the BITUMAT BITUPROTECT sheets together. If necessary, cut the sheets to fit all inter sections and protrusions. On vertical surface, butt the sheets and hold temporarily in place until backfill is accomplished.

BITUMAT BITUPROTECT can be fixed by cold / hot applied adhesives of bitumen depending upon the type of membrane used. When properly applied by workmen trained in roof waterproofing techniques, BITUMAT BITUPROTECT will serve as an effective protection system for a long time.

### Backfilling

Backfilling against vertical walls should be done within 48 hours maximum after installing the protection board. For horizontal applications,



# BITUPROTECT

## Bitumenous Protection Board

waterproofing and protection board should be installed just prior to the installation of the wearing surface. Backfill material should not be dropped against the protection course in such a manner that it could drag the sheet down as it drops.

### Packaging

3mm - 200 pieces  
6mm - 100 pieces  
10 pallets per trailer

### TECHNICAL DATA

PTM04 30-G R-02 30-I

	<b>Property</b>	<b>Typical Data</b>	<b>Test Method</b>
1	Flexibility at 25°C	Flexible	ASTM D 5147
2	Water absorption % 24 hours	0.2	ASTM D 570
3	Bitumen content % Min.	45	ASTM D 4
4	Softening point °C	120-135	ASTM D 36
5	Water permeability	Impermeable	ASTM E 96
6	Chemical and Salt resistance	Excellent	BITUMAT
7	Puncture resistance N	400	ASTM E 154

The information given in this Technical Data Sheet reflects typical median properties based on laboratory test, and practical experience; subject to the tolerance levels of UEAtc directives. However, as the product is often used under conditions beyond our control, we can't warrant but the product itself.

THIS PUBLICATION AUTOMATICALLY SUPERSEDES ALL PREVIOUS PUBLICATIONS RELATING TO THIS PRODUCT.

#### BITUMAT COMPANY LIMITED

Corporate Office : P.O. Box 7487, Dammam 31462, Kingdom of Saudi Arabia Tel. No. (966-3) 8121210 / 8121213 Fax No: (966-3) 8121190  
Central Region : P.O. Box 58698, Riyadh 11515, Kingdom of Saudi Arabia Tel. No. (966-1) 4770443 / 4792553 Fax No: (966-1) 4762318  
Western Region : P.O. Box 12605, Jeddah 21483, Kingdom of Saudi Arabia Tel. No. (966-2) 6644449 Fax No: (966-2) 6640509  
Email : [marketing@bitumat.com](mailto:marketing@bitumat.com) / Website: [www.bitumat.com](http://www.bitumat.com)



BITUMAT  
بيتومات

The Power to Perform

قوة في الأداء



NRCA MEMBER



ISO CERTIFIED